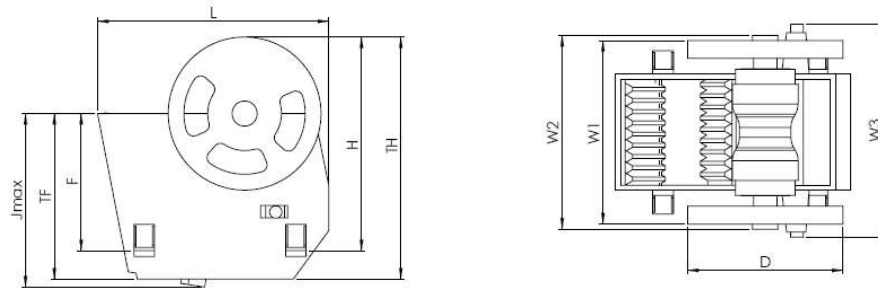


JAW CRUSHER CJ SERIES

CJ815



DIMENSIONS (mm)

Jmax,	TF	F	L	H	TH	W1	W2	W3	D
3 319	3 045	N.A.	4 496	N.A.	4 186	2 750	2 894	N.A.	2 170

WEIGHTS (kg)

Flywheel	Toggle Plate	Toggle Seat	Swing Jaw Complete	Frame Complete	Total Weight (approx.)
2 800	800	130	26 500	37 000	63 500

PERFORMANCE

Feed Opening (mm)	1 500 x 1 300									
Max feed size (mm)*	1 170									
Max motor power (kW)	200									
CSS (mm)	100	125	150	175	200	225	250	275	300	
Nominal Cap MTPH	-	-	480-625	545-710	610-800	675-885	745-975	820-1 070	885-1 160	
Standard Jaw Plates	Coarse Corrugated (CC)/Sharp Teeth (ST)/Heavy Duty (HD)									

* Apply for regularly shaped material. Occasional larger lumps can be accepted, but if material is irregularly shaped, difficulties may be also experienced with smaller lumps.

The left figures refer to fines removed from feed and the right refers to fines included in the feed.